



TEXAN GLASS & SOLAR CONTROL

SECURITY SHUTTERS & SCREENS

StoreSafe®



CounterSafe®



StormSafe®



ProductSafe®



HomeSafe®



 **QMI**[®]
AUTHORIZED DEALER



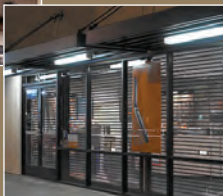
SECURITY ^{with} VISION

INNOVATION

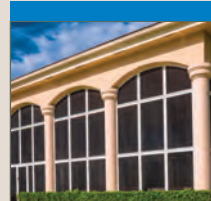
QoMPACT® Shutter System



- Residential Shutters
- Commercial Shutters
- Garage Doors (Europe Only)



StormSafe®



- Hurricane Protection
- Balconies
- Businesses
- Coastal Properties
- Government Properties
- Homes



StoreSafe®



- Cell Phone Stores
- Commercial Buildings
- Drive-Thru Windows
- Medical Centers
- Optometrists
- Retail Stores
- Schools



ProductSafe®



- Cell Phones
- Cigarettes
- DVDs
- Electronics
- Medical Records
- Pharmacy

CounterSafe®



- Concession Stands
- Fast Food/ Restaurants
- Kiosks
- Pharmacies
- Press Boxes
- Stadiums



HomeSafe®



- Weather & Security Protection
- Entry Door Security
- Home Theaters
- Patio Doors
- Porches
- Window Security



SMALL ROLL **many** APPLICATIONS



Versatile Shutter System



OVATION

Custom Applications

Residential Shutters



Commercial Shutters



Garage Doors (Europe Only)



Strong and Compact

Traditional roll shutters require large 10"-12" (250 mm - 300 mm) housings, ruining the style and look of your home. Now, with the Qompact shutter system, an 84" (2.1 m) tall opening will require only a compact 6" (150 mm) housing. That is 40-50% smaller, creating a much more appealing installation.



Sustainable

The World's First Sustainable Residential Roller Shutter

- Qompact curtain is 100% Recyclable
- Qompact shutter is 99% Recyclable
- Qompact has No Foam Filling
- Qompact is 99% Aluminum
- Qompact is 60% Recycled
- Qompact has No Waste



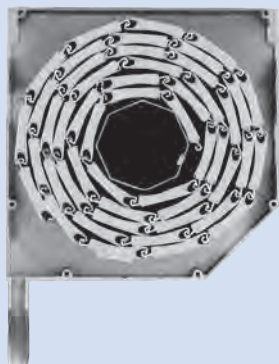
40-50% Smaller Shutter Box



QOMPACT

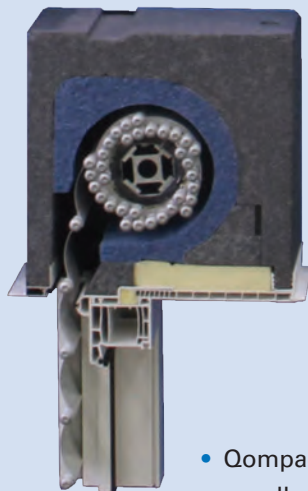
VS.

TRADITIONAL



QOMPACT
IS 40-50%
SMALLER THAN
TRADITIONAL

(Europe Only)



- Built in wall applications can have 30-40% more shutter box foam insulation
- Qompact slat hinges are strong enough to have curtains up to 6 m wide (20') and 5 m high (15')
- Qompact rolls are 40-50% smaller with hinges 27-times stronger* than foam-filled (*see pull apart test)

Note: Widths >12' may require a larger box size.

Smooth and Quiet

The Qompact® shutter system is available in manual and automatic operation. Using the patented nested design, the Qompact shutter system rolls smoothly and quietly. 6/6 nylon bushings allow the shutter to glide smoothly through the security guides.



Shutter Height	Qompact Box Size	Other Shutters Box Size
69" (1700 mm)	5.5" (140 mm)	8" (200 mm)
84" (2100 mm)	6" (150 mm)	10" (250 mm)
122" (3000 mm)	6.5" (165 mm)	12" (300 mm)
149" (3800 mm)	7" (180 mm)	12" (300 mm)
184" (4800 mm)	8" (205 mm)	14" (350 mm)

WORLD'S smallest SHUTTER BOX



Shutter System

Strong

Qcompact combines premium design with unparalleled strength. The single-walled, extruded slats withstand sledge hammer impacts and hurricane impact tests.

In head-to-head tests, Qcompact outperformed its foam-filled competitors every single time.



In impact testing, Qcompact withstood 82 punches, 5 kicks, and 80 hits with a sledge hammer. The foam-filled shutter was destroyed in seconds.

End Retention

End retention screws (shown below) keep the curtain captive in the rails. Qcompact curtains can't be pried out with crowbars or pushed out of the rails due to high winds.

Note: Qcompact can also be made without end retention where smaller siderails are sufficient.



Qcompact's end retention prohibits the curtain from being pushed out of the rails. Without end retention, the 40mm foam-filled curtain was easily compromised.

Hinge Strength

The improved slat design is 27-times stronger than a perforated 40mm slip hinge, making a Qcompact shutter impenetrable by comparison.



*Pull-Apart Strength Test with 152mm (6in.) Sample. Qcompact Pull Apart at 8050 kg/m
40mm Pull Apart at 296 kg/m*





Hurricane Tested

Qcompact shutters meet the strict standards for U.S. Florida (FBC) hurricane approvals. In fact, Qcompact passed with 330 km/h (200 mph) winds up to 6000mm (19.5 ft) wide.

Elegant Design and Engineered Excellence

What makes the Qcompact shutter system unique is the 10 different slat sizes that have been ingeniously engineered to allow the slats to nest tightly with each other. The nesting allows for virtually zero space between the slats, creating a compact roll and the smallest box housing required. Each slat grouping has a specific radius designed to accommodate the ever increasing roll diameter. This proprietary design means that each slat rolls together - perfectly.

Residential Shutters

Home owners will love the quiet operation, elegant design, and security of Qcompact.

In addition to privacy and sun shading, Qcompact uniquely provides security and hurricane protection.



Commercial Shutters

Qcompact can be built both wider and taller than foam-filled shutters, making it the perfect choice for commercial applications.

These shutters are widely used in the United States for their loss prevention and design benefits. Commercial shutters can be perforated for night time merchandising.



Nesting Innovation

The Qcompact Innovation is based on **10** slats that gradually get taller



THE CHOICE *is* CLEAR



Transparoll Security Shutters

StoreSafe®



VISION

Transparoll Security Shutters

Premium. Elegant. Protection.

Transparoll shutters are the premier security and partition shutters in the StoreSafe family. Transparoll is essentially a "glass" wall that allows for maximum visibility, protection, and elegance. The clear polycarbonate is 250 times stronger than glass of the same thickness. Transparoll shutters roll up when not in use. Transparoll shutters offer security without altering the aesthetic of the shopping environment. Perfect as a security partition or wall, Transparoll can be used for inside or outside applications. StoreSafe Transparoll shutters are the ultimate in vision security.



- The ultimate in security
- Highest visibility
- Reduce energy costs
- Prevent break-ins
- Protect against extreme weather
- Scratch resistant

LX-6 Security Shutters

Elegant Design. Strong. Protection.

Also fabricated with clear polycarbonate pieces, the LX6 rolling shutter is a lighter weight and medium-duty shutter with excellent visibility.

The LX6 is similar to the Transparoll, but with three foot wide sections of polycarbonate joined with a vertical spacer to make up the full shutter width. The lighter weight of the LX6 allows for the push-up/pull-down manual operation on shutters up to 100 sq ft.



Shown below, the side rails and box housings match the existing storefront (QMI bronze 06).

STRONG



SMOOTH



*ELEGANT
DESIGN*



Transparoll Security Shutters



Transparoll security shutters prevent theft while providing maximum visibility. Transparoll shutters are covered in a scratch resistant coating, which allows for graffiti to be removed easily. In addition, Transparoll is UV-resistant, preventing discoloration and ensuring the shutter maintains its clarity. The Transparoll shutter is made of 6mm thick polycarbonate, which has a smooth surface, leaving potential intruders with no grip. Transparoll is available in widths up to 18ft. in one piece. Transparoll shutters are installed using solid guides that virtually cannot be broken.



Emergency Release Devices (ERD) and battery backup operation are available.

LX-6 Security Shutters

- Anodized "silver" aluminum horizontal ribs
- QMI standard 7 colors available for box housing, side rails, and bottom slat
- Most sizes available with tubular motor operation - keeping box housing size smaller
- Excellent visibility
- Polycarbonate inserts up to 36" (914mm) wide



For both interior and exterior use, the LX6 rolling shutter provides a physical security barrier without compromising the aesthetic. Useful at restaurant patios for patron comfort, or to keep burglars from even attempting a break-in, the QMI LX6 clear shutter system provides convenient protection.



The LX6 shown above offers clear views of the merchandise, but warns would-be-intruders this store is well protected.

Vision Shutter Comparison Chart

QMI StoreSafe Vision Model	Cost factor	Max size spring assist push up/pull down	Max size tube motor w/ std housing	External jack shaft motor required (no housing available)	3x3 or 4x4 steel post required
Transparoll	*****	n/a	n/a	all up to 200 sq ft	yes
LX6	**	100 sq ft	140 sq ft	141 to 280 sq ft	w/ ext motor
AL7-Perforated slat	*	160 sq ft	170 sq ft	171 to 300 sq ft	w/ ext motor

QMI StoreSafe Vision Model	Side rail size	Max width	Max height	Security level	Polycarbonate slat thickness	Hurricane rated	Vision
Transparoll	3.25"w x 2.25"d + angle	18'	12'	high	.25"	no	excellent
LX6	3.5"w x 1.06"d	24'	15'	medium	.093"	no	very good
AL7-Perforated slat	3.375"w x 1.06"d	30'	15'	high	punch aluminum	solid only	good

note: sq ft sizes shown for estimating only. Actual widths and heights will determine actual mounting/control requirements

Transparoll Security Shutters



LX-6 Security Shutters



Safe Selling All Night Long

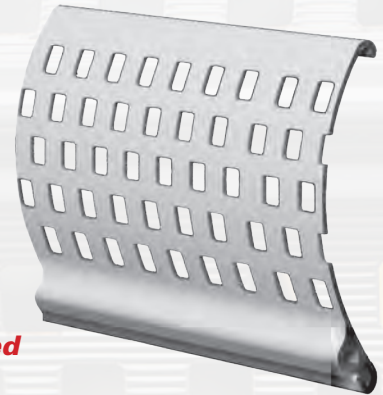


Punched slats allow protected nighttime store views, but disappear into the shutter's box housing during the day.

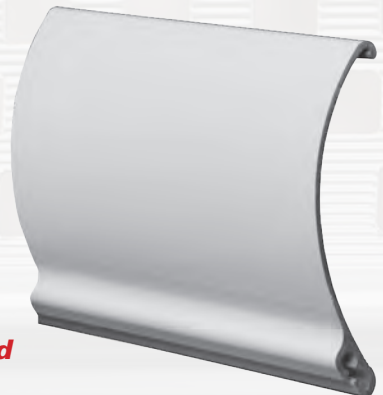
"Security with Vision."

- The ultimate in security
- High visibility
- Reduces energy costs
- Prevents break-ins
- Smallest roll up coil available
- No hand-holds

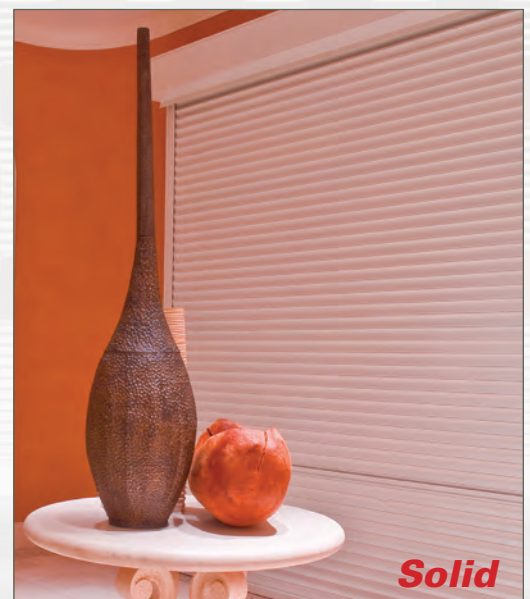
Available Options



punched



solid



Solid

Security



Commercial applications are typically installed on the interior side of the glazing. Intruders want in and out fast. QMI shutters take burglars WAY too much time.

Vision



Perforated slats keep your signage and displays working for you - "Security with Vision."

"A cell phone store near Atlanta suffered 28 break-ins during a 2-year period. Since getting QMI StoreSafe shutters they have not incurred a single break-in attempt - going on 3 years now."

~ Retail Loss Prevention ~

Electronic Stores



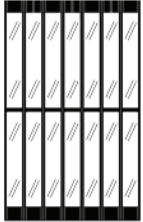
Specialty Stores



Department Stores



Q-Clear



The clean, attractive lines of the Q-Clear sliding grille make it the most popular style of storefront closure in malls. Clear, wide inserts give an unobstructed view of displayed merchandise and store interior design, while providing a protective barrier against theft and intrusion.

QMI's smooth-rolling grilles run on 1-1/8" (28.6 mm) diameter twin rollers in a tough overhead track that

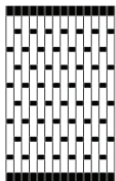
is our exclusive design. Q-Clear grille curtains and lock posts are suspended with 5/16" (7.9 mm) diameter cold rolled steel hanger rods that reduce deformation over the lifetime of the grille.

Polycarbonate 1/8" (3.2 mm) inserts provide shatterproof, clear glazed, secure grilles that virtually eliminate smash and grab theft.



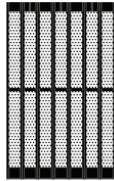


Additional Styles



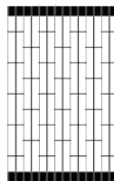
Q-Guard

This tough open style grille provides a high level of security while keeping the sense of open space. Its robust construction is based on the system of individual panels interlocked by full height hinge members. Hinge rods are completely concealed to protect them from vandalism and damage. The panels fold cleanly and positively, resulting in a smooth and easy to operate grille.



Q-Air

Q-Air is a popular sliding grille: tough enough to be an effective security barrier while providing a clear view of architecture and merchandise. Q-Air is perforated with a custom pattern of slots that are narrow to prevent penetration and long to provide excellent vision and air flow.



Q-Classic

The most economical and light weight open style sliding grille, it easily blends with any décor, providing unobtrusive protection. Its fine, graceful lines and high visibility make the Q-Classic an effective barrier, while maintaining a sense of open space.

SEE the DIFFERENCE

PROTECTION **with** VISION



Stainless Steel Screens

StoreSafe®



SECURITY

Security & Vision

Protect against glass breakage. Woven stainless steel mesh fixed into a strong perimeter mounting frame covers most storefront and window glazing from attack. Keep intruders out without feeling caged in.

"Screens with Vision."

- Churches / Museums
- Dormitories / Schools / Student Housing
- Municipal Buildings
- Laboratories
- Secure offices

View

QMI security screens enable views toward the greatest degree of light. Customers can see outside during the day and retailers can merchandise safely all night long—just leave the lights on. Screens will repel most rocks, bricks, knives, crowbars, and sling shots.



Maintain architectural design and aesthetic curves. The subtle stainless steel screen frame is fabricated to integrate with the building design while providing maximum security with minimum visual impact.

Security & Vision

Security without sacrificing architectural building design. The low profile screen frame fits building contours and has the appearance of a bug screen.



Before - Unprotected



After - Protected

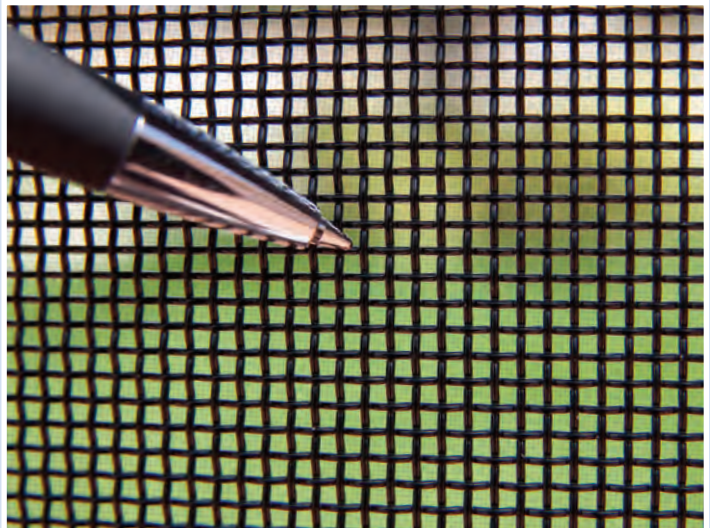
Safety without Design Compromise

Municipal complexes protected from vandalism without any modifications to the structure or building aesthetics.



Protection

Woven high-tensile 304 grade stainless steel wire secures occupants and provides clear exterior vision.



COMMERCIAL with SCREENS VISION

SMALL BOX **big** PROTECTION



Solid Rolling Shutter System

PRO



CounterSafe®

TECTION

Pharmacy

CounterSafe® security shutters may be solid slat, or more commonly, with the perforated Punch 51 slat to enable airflow between the pharmacy and the store without any sacrifice in security.



Side Folding Grilles may have curved top tracks for open pharmacy configurations and the curtain stack is often hidden in a side pocket.

QMI rolling shutters may be up to 30 feet (9.1 m) wide and up to 15 feet (4.6 m) tall to protect most straight line applications.



QMI's LX6 rolling shutter utilizes clear polycarbonate inserts which are 250x stronger than glass, yet provides maximum visibility.



Kiosk & Counters

CounterSafe rolling shutters are perfect for protecting valuable merchandise that is kept behind a counter. Perfect for preventing theft, CounterSafe shutters are used in pharmacies, press boxes, stadiums, concession stands, food counters, and much more.



Rolling counter shutters provide a security barrier that is quick to deploy and easy-to-use. QMI counter shutters can be installed on the interior of the application to give it a sleek look.



The counter shutter can be securely locked with a slide bolt or keylock, which deploys a locking bolt sideways into the mortised side rails, keeping the counter clear. Push-up/pull-down operation is easy to deploy, enabling employees to secure an area in just a few seconds.



**Amusement
Park Kiosk**

**Golf Course
Counter Bar**



SECURITY **with** PROTECTION

NO ORDINARY **bug** SCREEN



Hurricane Security Screens



StormSafe®

STRONG

StormSafe®

Hurricane & Security Screens



STORM/HURRICANE

Hurricane-rated protection
repels flying debris



RESIDENTIAL

Safe and visually pleasant
home environment



SECURITY

Deters intruders and
reduces glass breakage



ENERGY EFFICIENCY

Reduces heat load and
enables secure ventilation

No Ordinary Bug Screen

Stop burglars in their tracks.
Stop flying storm debris from
breaking your windows. The nearly
impenetrable stainless steel screen
protection by QMI provides year-
round safety, yet allows airflow
and light into your home just like
a bug screen.





Hurricane and Security Protection

- Permanent storm and security protection. Your home is protected 24/7/365 while never appearing boarded up.



Never a rush to deploy storm protection. Leave your home knowing it's secure no matter what happens while you are gone.



Custom Built to Most Any Shape

Arch



Polygon



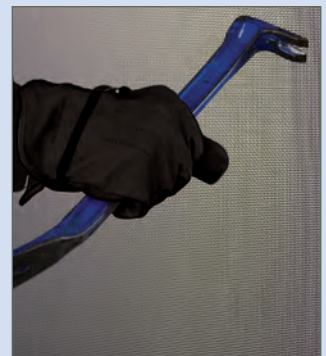
Specialty



Florida Building Code (FBC) approved.
Miami-Dade (HVHZ) approved.

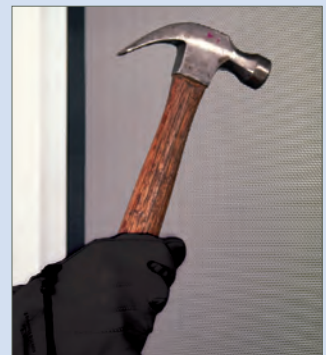
Security Without Compromising Design

- **Knife Sheer Test**
Simulated razor knife attack on mesh
- **Large Missile Hurricane Test**
30mph 2x4 shot against mesh protecting window
- **Dynamic Impact Test**
100lb. bag swung against mesh
- **Jimmy Test**
Strength test simulating attempted crow bar forced-entry



Additional Benefits

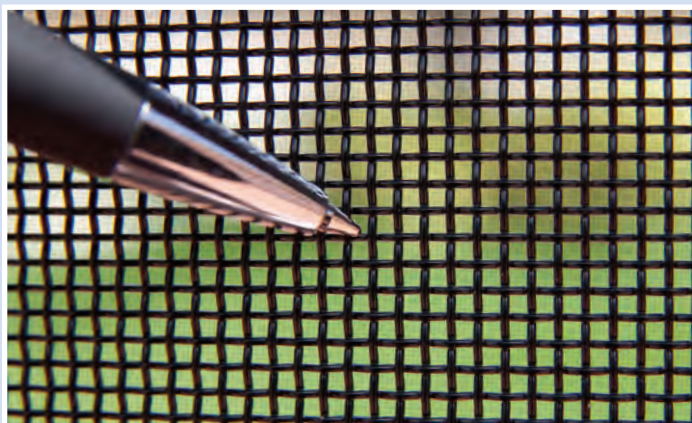
- Security
- Bug/Lizard/Alligator/Screen
- Ventilation
- Exterior Views
- Energy Savings
- Peace of Mind



StormSafe® Hurricane & Security Screens

Hurricane and Security Screens with Vision

- Meets the large missile impact test for Category 5 hurricanes-the most stringent residential test available
- Reduces glass breakage from flying debris
- Replaces your everyday bug and lizard screens



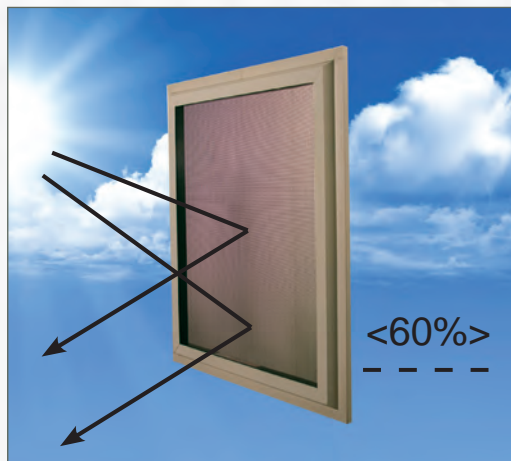
- Escape window screens available-provides both protection and ease of exit
- Shields windows from hurricane force winds and flying debris
- The screen's surface tension stops damaging winds, but still allows light breezes and ventilation like an ordinary bug screen



- Repels storms and protects from intruders 24/7/365



- A simple panic bar along one side provides easy emergency egress; however, burglars and flying debris are kept safely outside. Hinged screens should be used on bedrooms and basement windows for safety.



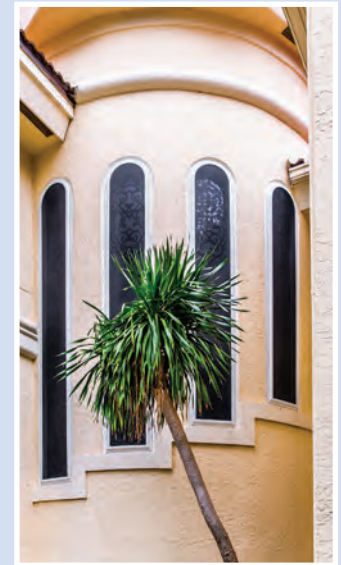
- Shades the sun up to 22% without compromising exterior views
- Reduces UV rays up to 60%, saving carpets and furniture from fading

No Visual Compromises

- Vision through the hurricane screens is nearly the same as an ordinary bug screen.
- Remove the old, window bug screen. The new hurricane-security screen frame mounts on the trim over and around the existing window, fastening into the building's structure.
- The screen material is always black, enabling your vision to go toward the greatest degree of light without compromise-giving you excellent daytime visual acuity. Lighter colored screens like gray or aluminum bounce light back into a person's eye and reduce the visual clarity.

No Architectural Compromises

- Low-profile shaped or rectangular fixed screen frames are just 2-7/16" (61.9 mm) wide x 1-1/8" (28.6 mm) deep.
- Mounting is typically placed over existing trim or brick molding, thus the new StormSafe screen blends with the architecture.
- Egress screens have a continuous hinge on one side and the panic bar on the other. Egress frames are still only 3-3/4" (95.3 mm) wide x 2-13/16" (71.4 mm) deep. For aesthetic consistency, where an egress frame occurs, it is recommended to have all egress screens on that same elevation.



PROTECTION **with** VISION

Security Storage

ProductSafe® security cases are designed to protect valuable merchandise from theft. Steel cases with roll down protection are easy to use and easy to secure. When open, the security door is completely out of sight.



ProductSafe cases are ideal for protecting:

- cell phones • cigarettes • cameras • video games • DVDs • jewelry • designer glasses • pharmaceuticals • electronics • medical records

ProductSafe cases are customized for each retailer to ensure they are convenient and easy to use. Cigarette cases are fitted with spring slides. Pharmacies often use combinations of fixed upper baskets and pull out lower shelves/baskets to conveniently sort through customer prescriptions.

Electronics retailers often incorporate peg hooks in the upper portion of the cases for smaller items, and fixed or pull out shelves on the bottom for larger boxed inventory. Uniweb/slat wall or steel peg board backs and adjustable shelves are available.

- Reduce “smash and grabs”
- Out of sight during business hours
- Custom designed to your specifications
- Simple push-up/pull-down operation





HomeSafe®

Security Shutters & Screens



Rolling Shutters

In addition to home security screens, rolling shutters are available to provide protection from severe weather and sun damage. Aesthetically pleasing and subtle, HomeSafe® rollup shutters are invisible from the inside when installed on the exterior of a home. Hurricane-approved, HomeSafe shutters are available in several attractive options. QMI rolling shutters are designed to fit the smallest box housing in the industry, which allows for a more subtle look and smaller space. HomeSafe also offers curved, beveled, or square housings to blend into your home's architecture. Battery operated systems are also available.

Security Screens

HomeSafe security screens provide high-quality home security and storm protection. Perfect for windows and patios, HomeSafe screens are beautifully designed and quality assured. QMI security screens are only slightly darker than a regular bug screen, but provide superior protection. Screens are quality tested to ensure they discourage burglars and deflect flying debris.

- Hurricane-approved
- Prevents break-ins
- Screens and shutters available
- Reduces sun damage
- Control options available
- Reduces outside noise
- Helps prevent water damage
- Smallest box housing available
- Protects against extreme temperatures



SECURITY and PROTECTION

Shutter Controls & Options

Torsion Spring Assist Control Systems

QMI shutters have a non-slip hinge, which allows for the use of a torsion spring inside the tube opposite the control mechanism.

The spring assist has many advantages to standard shutter controls.



Manual Strap

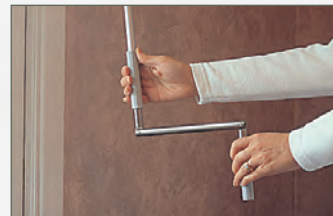
A manual pull strap can be used on larger shutter sizes since the weight of the shutter is neutralized. The spring provides a counterbalance resulting in the shutter locking in the down position.



Manual Gear / Crank

The spring assist neutralizes the weight and enables gear operation for larger shutters and requires less effort to rotate the hand crank.

- up to 65 sq ft (6.5 sq meters)



Manual Push-up / Pull-down

Where most shutters require motors, the QMI spring-operated shutter allows for push up/pull down operation. This saves on both shutter and electrical costs. Large spring-operated shutters are useful for entry doors, as egress (life safety) issues are not a concern. Simple base-slat locks enable security, but allow for escape during fire or power failures. Spring operation is available up to 130 sq ft (13 sq meters) without motors or gears.



Solar Powered Operation

Enjoy energy savings from a roller shutter that does not add to your energy cost. Because of its spring-loaded tube, QMI shutters require less power for operation. This makes it possible to operate with a solar-powered battery.



Motorized with Line Voltage (120v) (220v)

The torsion spring allows for smaller motors and extends motor life. It also acts as a safety feature that prohibits a failed motor to allow a shutter curtain to free-fall.

- up to 170 sq ft (16,2 sq meters) w/tube motors
- up to 300 sq ft (30 sq meters) w/external motors



Hz/RTS Remote Control

- Available in single and multi-channel applications
- No need to aim the control at the motorized window covering, the radio signal travels through walls similar to a garage door opener
- Provides the ability to control motorized window coverings individually and/or by group with one control
- Offers a range of 65 ft (22 m) for easy operation



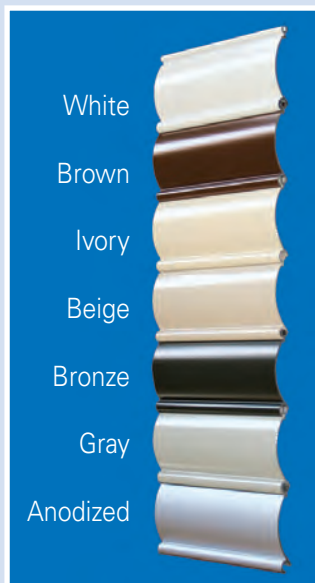
EZ Drive Low Voltage Motor (14.4v)

- One smart drive controller operates multiple shutters
- Rechargeable battery power - no worries about power failure
- Solar use possible
- up to 65 sq ft (6.5 sq meters)



Housing, Side Tracks & Curtain Colors

Compact & AL7



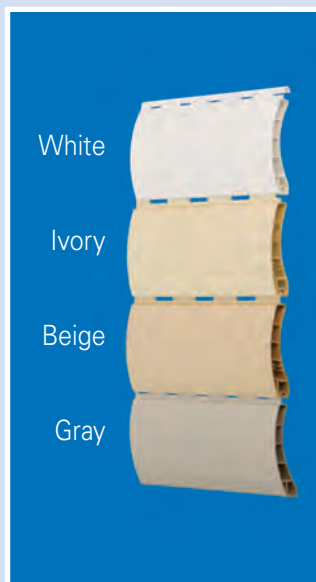
Perforated P51 Vision Slat



Foam-Filled



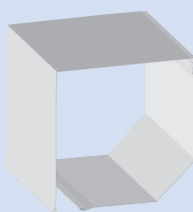
PVC



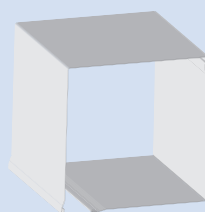
Custom colors available with additional lead time.

Not all colors are available in all styles. *Consult actual mfr. product samples for exact color representation.*

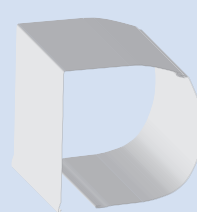
Box Housing Styles



45°



90°



Round

* Box size varies 6"-16", see website for technical charts.

SECURITY **with** VISION



**24625 BUDDE RD.
THE WOODLANDS, TX 77380**

**PHONE: 281-296-6200
EMAIL: SALES@TEXANGLASS.COM**

WWW.TEXANGLASS.COM

